

## STAGED FILTRATION SYSTEM

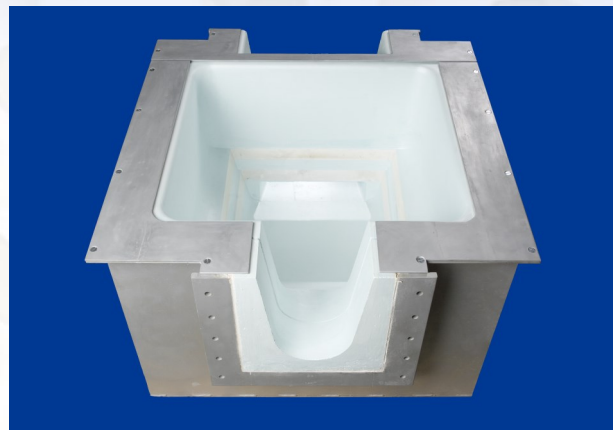
*The Next Step in Melt Filtration Technology*

- **High Filtration Efficiency:**  
Easy to use  
Operator acceptance  
Highest possible inclusion removal  
Innovative compact design
- **Flexible Technology:**  
Use 1 or 2 filter elements as production demands  
Just drain between casts to change alloys
- **Economic Operation:**  
Low installation and variable operating costs  
Use industry-standard size filter elements  
Use conventional preheat burners
- **SELEE® Reliability:**  
Aluminum casting know-how  
Over 40 years of experience  
Application Engineers  
In-house design

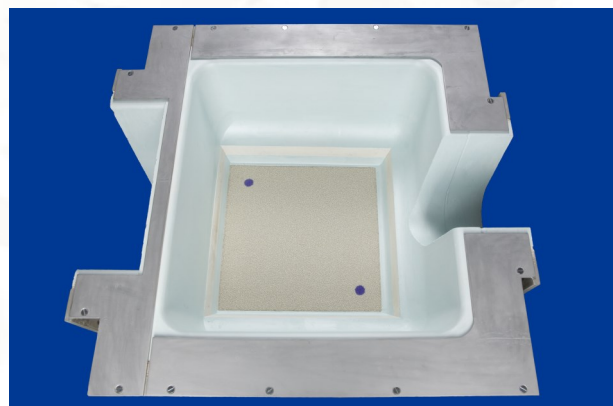
SELEE® Staged Filtration is a highly efficient process for removing inclusions from molten aluminum. A filter bowl with a second stage, finer pore filter element directly below the first stage element, is the answer to increased quality requirements for fabricated aluminum products.

The ceramic foam filter of SELEE® structure functions as a deep bed filter, retaining inclusions throughout its depth. Increasing filter thickness and decreasing filter pore size increases the deep bed filtration effect incrementally. SELEE's licensed staged filtration technology achieves this significantly higher capture by allowing the use of two filter elements of progressively finer pore size, resulting in maximal inclusion capture efficiency.

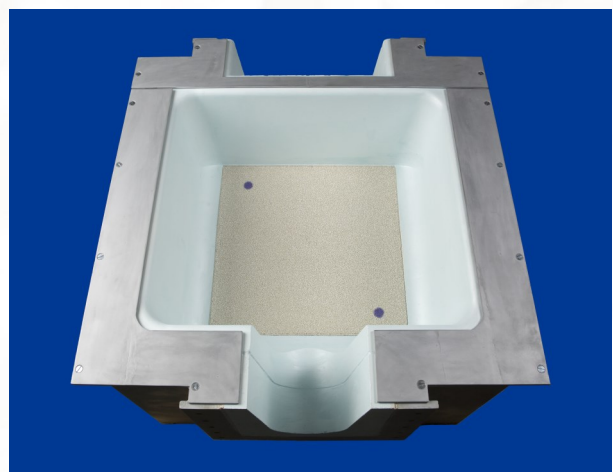
To learn more about how staged filtration technology will benefit your aluminum casting operation, please contact the SELEE technical sales representative in your area.



SELEE® Staged Filter Bowl prior to installation of filter elements



SELEE® Staged Filter Bowl with lower filter element installed



SELEE® Staged Filter Bowl with both filter elements installed

**SELEE® Corporation**  
700 Shepherd Street  
Hendersonville, NC 28792, USA

+1.828.697.2411 (Main)  
+1.828.694.3450 (Sales)  
+1.800.438.7274 (Toll-Free)  
[customerservice@selee.com](mailto:customerservice@selee.com)  
[www.selee.com](http://www.selee.com)